

# PMCO

PETERSEN MANUFACTURING COMPANY INC

Metal Site Furnishings



Quality Products since 1913

Benches . Tables . Bollards . Planters . Waste Receptacles

Ash Urns . Drinking Fountains . Security Barriers

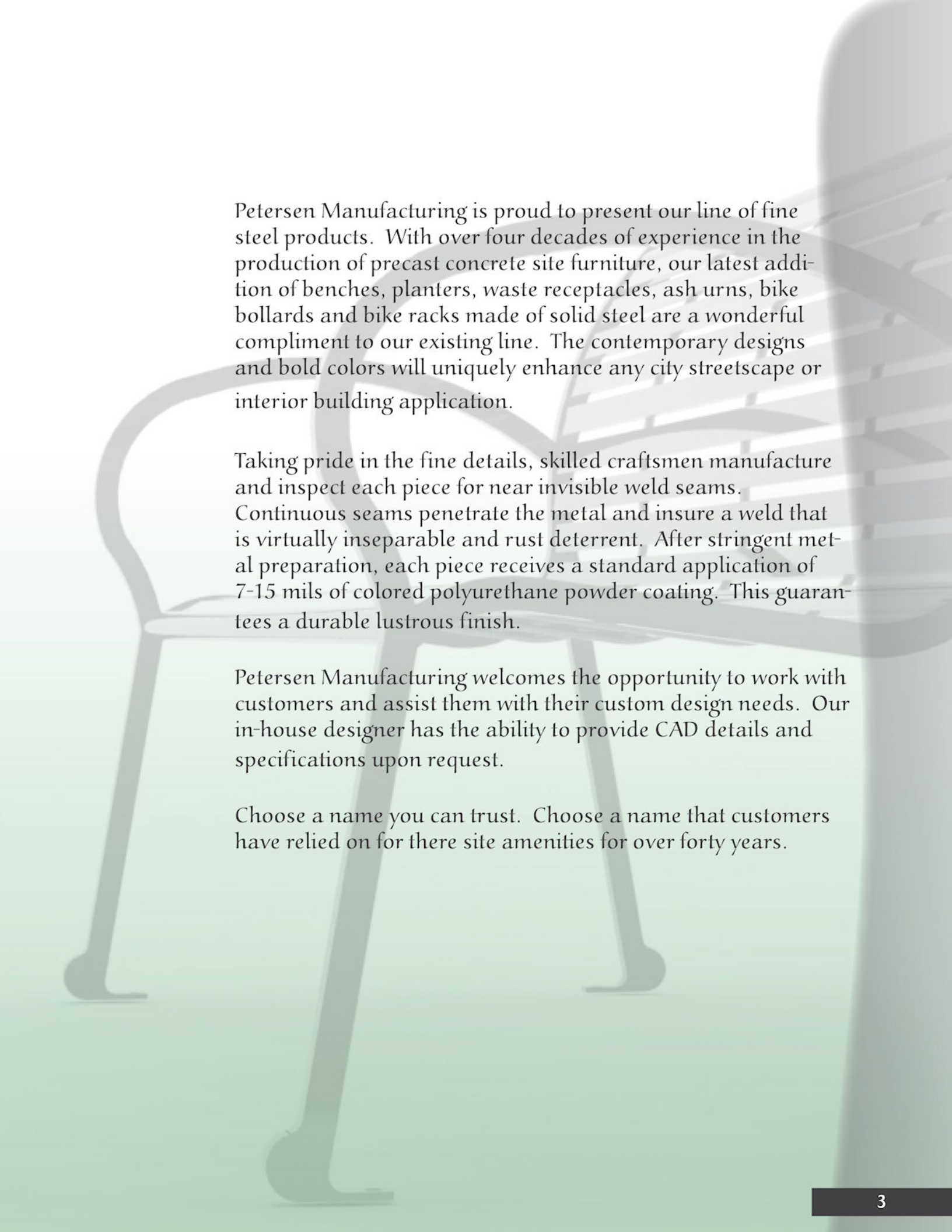
800-832-7383 . [www.Petersenmfg.com](http://www.Petersenmfg.com)



Petersen Manufacturing Company, Inc.  
Metal Site Furnishings Division

P.O. Box 664  
Denison, Iowa 51442

P: 1-800-832-7383  
[www.Petersenmfg.com](http://www.Petersenmfg.com)



Petersen Manufacturing is proud to present our line of fine steel products. With over four decades of experience in the production of precast concrete site furniture, our latest addition of benches, planters, waste receptacles, ash urns, bike bollards and bike racks made of solid steel are a wonderful compliment to our existing line. The contemporary designs and bold colors will uniquely enhance any city streetscape or interior building application.

Taking pride in the fine details, skilled craftsmen manufacture and inspect each piece for near invisible weld seams. Continuous seams penetrate the metal and insure a weld that is virtually inseparable and rust deterrent. After stringent metal preparation, each piece receives a standard application of 7-15 mils of colored polyurethane powder coating. This guarantees a durable lustrous finish.

Petersen Manufacturing welcomes the opportunity to work with customers and assist them with their custom design needs. Our in-house designer has the ability to provide CAD details and specifications upon request.

Choose a name you can trust. Choose a name that customers have relied on for there site amenities for over forty years.

# Spencer Series



Planter

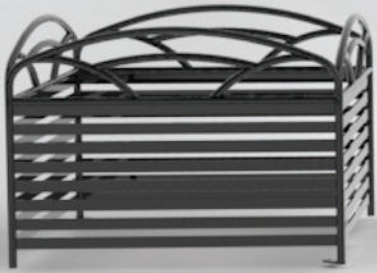


Waste Receptical

The **Spencer Series** features a unique architectural pattern and tailored design. With the demand for quality long lasting site furniture, this series will be sure to please.

Bench	L	W	H
SPC48	48"	22"	35"
SPC74	74"	22"	35"
SPC96	96"	22"	35"
SPFB96	96"	18"	25"
Planters			
SPCP63	63"	21"	24"
SPCP31	31"	31"	24"
Waste Receptacles			
SPCT32		25"	40"

# Breckenridge Series



Bike Bollard



Bike Rack



Table



Snuffer

The **Breckenridge Series** is a contemporary steel design that features a combination of curved and flat steel. This bold look will be sure to enhance any setting.

Bench	L	W	H
BRK48	48"	21"	39"
BRK72	72"	21"	39"
BRKFB48	48"	19"	25"
BRKFB72	72"	19"	25"
Planters			
BRKP36	36"	36"	24"
BRKP24	24"	24"	18"
Waste Receptacles			
BRKT32		31"	50"
BRKT36		31"	35"
BRKTNONL	23"	23"	44"

# English Series



Planter



Snuffer

The **English Series** offers a sleek look with straight lines and rolled curves. This series will no doubt draw attention with its unique look and style.

Bench	L	W	H
EB48	48"	23"	43"
EB72	72"	23"	43"
EB96	96"	23"	44"
EFB72	72"	20"	25"
EFB48	48"	20"	25"
Planters			
ERP30		36"	30"
Waste Receptacles			
ERST32		27"	35"
ERSTA32		27"	35"

# ISU Series



The **ISU Series** radiates classic elegance. The classic style and natural grace brings a striking look that allows it to stand out in any setting. This series will add a touch of class with its unique look.

Bench	L	W	H
ISUB72	72"	28"	41"
Planters			
ISUP		25"	22"
Waste Receptacles			
ISUT40		24"	36"

# Lemars Series



Table



Flat Bench

The **Lemars Series** with its stylish, classic design will transform any streetscape, landscape, or sitting area. This elegant look will get their attention.

Bench	L	W	H
LB48	48"	26"	32"
LB72	72"	26"	32"
LB96	96"	26"	32"
LB48WOB	72"	25"	23"
LB72WOB	48"	25"	23"
LB96WOB	96"	25"	23"
Snuffer			
AVES		16"	24"
Waste Receptacles			
AVES24	25"	33"	AVES42 28" 38"
AVES36	28"	42"	AVES45 28" 41"



# Novak Series



Bike Rack



Snuffer

The **Novak Series** is a traditional style demonstrating opposing lines for an eye appealing view. This series will provide many years of enjoyment.

Bench	L	W	H
NVBB48	48"	21"	39"
NVBB72	72"	21"	39"
NVFB48	48"	20"	25"
NVFB72	72"	20"	25"
Planters			
NVP24	24"	24"	18"
NVP36	36"	36"	24"
Waste Receptacles			
NVT32	24"	24"	35"
Snuffer			
NVS	12"	12"	24"

# SummerField Series



Snuffer



Bike Rack

The **Summerfield Series** with its sleek lines and gentle curves offers the distinctive grace that many settings require. Solid flat steel construction assures years of trouble free use.

Bench	L	W	H
SFBB48	48"	20"	44"
SFBB72	72"	20"	44"
SFB48	48"	22"	24"
SFB72	72"	22"	24"
Planters			
SFP24	24"	24"	18"
SFP36	36"	36"	24"
Waste Receptacles			
SFT32	24"	24"	35"
Snuffer			
SFS	12"	12"	24"

# Sunrise Series



Tables



Tree Guards



Bike Bollard

The **Sunrise Series** with its curves and angles has a charming style that will enhance any indoor and outdoor setting.

Bench	L	W	H
SUNB48	48"	21"	44"
SUNB72	72"	21"	44"
SUNFB48	48"	23"	24"
SUNFB72	72"	23"	24"
Planters			
SUNP24	24"	24"	18"
SUNP36	36"	36"	24"
Waste Receptacles			
SUNT32	24"	24"	35"
Snuffer			
SUNS	12"	12"	24"





Petersen Manufacturing Company, Inc. Products bring a touch of style, class and comfort to any venue. Enjoy years of reliable maintenance free designs. Petersen products radiate a clean look of elegance and transform the ordinary into an exceptional setting. These extremely durable and versatile products are offered in a wide range of colors and styles that will compliment any setting.

For Information on any other fine Petersen product lines please contact us at 1-800-832-7383 or reach us at our web site [www.petersenmfg.com](http://www.petersenmfg.com).



# Benches



**LB**

L W H  
96" 28" 32"  
72" 28" 32"  
48" 28" 32"



**SUNRISE**



**NOVAK**



**LBWOB**

L W H  
96" 24" 23"  
72" 24" 23"  
60" 24" 23"  
48" 24" 24"



**SUNRISEWOB**

L W H  
72" 23" 24"  
48" 23" 24"



**NOVAKWOB**

L W H  
72" 20" 25"  
48" 20" 25"



**SUMMERFIELD**

L W H  
72" 20" 44"  
48" 20" 44"



**CAMARCH**

L W H  
72" 28" 37"



**TREEBENCH**

L W H  
85" 33"



**SUMMERFIELDWOB**

L W H  
72" 22" 24"  
48" 22" 24"



**CAM72**

L W H  
72" 24" 31"



**ISUB**

L W H  
72" 28" 41"



**BRECKENRIDGE**

L W H  
72" 21" 39"  
48" 21" 39"



**ENGLISH**

L W H  
96" 23" 44"  
72" 23" 43"  
48" 23" 43"



**ASPEN**

L W H  
74" 22" 35"  
48" 22" 35"



**BRKTFLAT**

L W H  
72" 19" 25"  
48" 19" 25"



**ENGLISHFLAT**

L W H  
72" 20" 25"  
48" 20" 25"



**SLMB72**

L W H  
72" 25" 32"



**CRAWFORD**  
L W H  
72" 23" 40"



**STONE**  
L W H  
72" 29" 31"



**BOULEVARD**  
L W H  
72" 25" 33"



**RIDGELINE**  
L W H  
72" 23" 43"



**SPC**  
L W H  
74" 22" 35"  
48" 22" 35"



**NAPLESSB72**  
L W H  
72" 23" 35"



**NBWB78**  
L W H  
72" 20" 20"



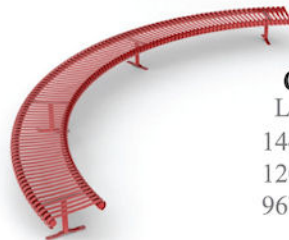
**MB**  
L W H  
72" 15" 19"  
48" 15"



**PO96**  
L W H  
96" 18" 18"



**MOD78**  
L W H  
78" 28" 32"



**CARDINAL**  
L W H  
144" 17"  
120" 17"  
96" 17"



**MB2**  
L W H  
72" 15" 19"



**FLORENTINE**  
L W H  
72" 26" 32"

Many benches come in 4, 6 and 8 ft lengths with custom lengths available upon request. With our on site design team there are no custom jobs too big or too small. For more available styles and sizes please visit our web site at [www.petersenmfg.com](http://www.petersenmfg.com)

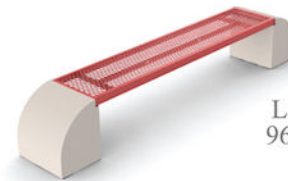
## Concrete Incorporated benches



**CMB**  
L W H  
53" 24" 34"



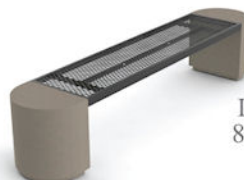
**MESA**  
L W H  
96" 15" 16"



**HMBM**  
L W H  
96" 16" 16"



**HCBM**  
L W H  
85" 15" 16"



**HCBM19**  
L W H  
85" 15" 16"



**C2BENCH**  
L W H  
72" 15" 16"

Benches

# Tables



**ENGLISH**  
L W H  
67" 67" 30"



**LEMARS**  
L W H  
81" 81" 30"  
81" 42" 30"



**CAMRNDT**  
L W H  
77" 77" 30"



**SUNRISE**  
L W H  
66" 66" 30"



**BRISTRO TABLE**  
L W H  
72" 30" 44"



**BRECKENRIDGE**  
L W H  
72" 33" 30"



**RTM6**  
L W H  
72" 66" 29"



**RTM6H**  
L W H  
72" 66" 29"



**RSOTS**  
L W H  
64" 64" 30"





**BROADWAY**

Dia H  
30" 18"



**BSDP**

Dia H  
28" 24"



**SPENCER**

Dia H  
41" 28"



**ENGLISH**

Dia H  
37" 30"



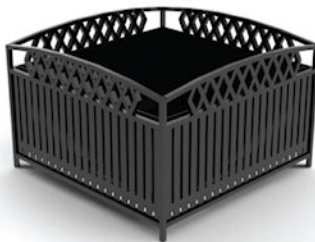
**ISUP**

L W H  
25" 25" 24"



**SPENCER  
SQUARE**

L W H  
63" 21" 24"  
31" 31" 24"



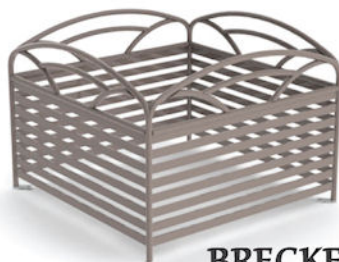
**NOVAK**

L W H  
36" 36" 24"  
24" 24" 18"



**SUNRISE**

L W H  
36" 36" 24"  
24" 24" 18"



**BRECKENRIDGE**

L W H  
36" 36" 24"  
24" 24" 18"



**SUMMERFIELD**

L W H  
36" 36" 24"  
24" 24" 18"

# Waste Receptacles



**ASPEN**  
Dia H  
25" 40"



**VENETIAN**  
Dia H  
29" 35"



**AVE24**  
Dia H  
25" 33"



**BSD32**  
Dia H  
29" 34"



**BROADWAY**  
Dia H  
28" 36"



**BRKT**  
Dia H  
31" 50"  
35" 31"



**ISU40**  
Dia H  
24" 36"



**VAIL**  
Dia H  
29" 33"



**PEM24**  
Dia H  
24" 33"



**CAM36**  
Dia H  
28" 34"



**SPENCER**  
Dia H  
25" 40"



**ENGLISH**  
Dia H  
27" 35"



**FLT36**  
Dia H  
26" 33"



**NBWT**  
Dia H  
36" 33"



**BRKTPM**  
Dia H  
17" 21"



**BRKT-NO**

L W H  
23" 23" 45"



**BRKT-SUNRISE**

L W H  
23" 23" 45"



**NOVAK**

L W H  
24" 24" 35"



**SUNRISE**

L W H  
24" 24" 36"



**SUMMERFIELD**

L W H  
24" 24" 35"



**NAPLEST22**

L W H  
27" 27" 29"



**BRKTRT**

L W H  
65" 22" 44"



**RECY3-CLOVER**

L W H  
44" 41" 32"

Waste Receptacles

## Lid Options

**Bonnet Top  
w/Snuffer**



**Bonnet Top**



**Standard Lid**



# Bike Bollards



**BRKT**

L W H  
23" 6" 36"



**SUNBRKBB**

L W H  
8" 8" 36"



**SUNRISE**

L W H  
16" 16" 36"



**SQBB**

L W H  
13" 9" 36"



**WBB**

L W H  
16" 16" 36"

# Bike Racks



**BRKT**

Dia H  
48" 38"



**SUMMERFIELD**

L W H  
75" 25" 47"



**SUNRISE**

L W H  
72" 34" 36"



**WINDSOR**

L W H  
72" 34" 36"



**NOVAK**

L W H  
75" 25" 49"



**TYPE B**

L W H  
30" 7" 36"



**PBR2**

L W H  
40" 9" 35"



**PBR1**

L W H  
15" 9" 36"

# Snuffers

---



**BRKT**  
Dia H  
18" 24"



**AVES**  
Dia H  
16" 24"



**ENGLISH**  
Dia H  
19" 24"



**SPS-42**  
Dia H  
12" 42"



**NOVAK**  
L W H  
12" 12" 24"



**SUMMERFIELD**  
L W H  
12" 12" 24"



**SUNRISE**  
L W H  
12" 12" 24"



**BRKTNOS**  
L W H  
13" 13" 34"

# Tree Products

---



**BRECKENRIDGE**  
Dia H  
20" 48"



**SUNRISE**  
Dia H  
20" 48"

# Powder Coat Colors



**BROWN DERBY**



**SILVER GRAY**



**BURGUNDY**



**AERO YELLOW**



**LITTLE RED WAGON**



**GRAY MIN TEX**



**SPARTAN BRONZE**



**BAY FOG**



**RAPID TAN**



**EVERGREEN**



**POST OFFICE BLUE**



**PRO GREEN II**



**BLACK**

Powder Coating Standard Colors.

Note: Color will vary slightly in brochure compared to actual Product. Samples upon request.

# Plastisol Coating Colors



**BROWN**



**RED**



**BLACK**



**BRIGHT BLUE**



**GREEN**

# Petersen Manufacturing Company, Inc.

## Quality & Dependability

### General Description:

All metal products are first prepared by sandblasting all mill scale from the steel. Then it receives an application of corrosion inhibiting iron phosphate prior to applying the powder coating. The metal receives an electrostatically applied coating of powder and is then oven-cured according to the standard specifications for powder coating manufacturing. The result a high quality and lustrous finish.

### Shipping:

Our large inventory enables us to ship to any customer in the United States generally within a two week period or earlier. Special orders and overseas shipping requires a somewhat longer delivery period.

### Warranty:

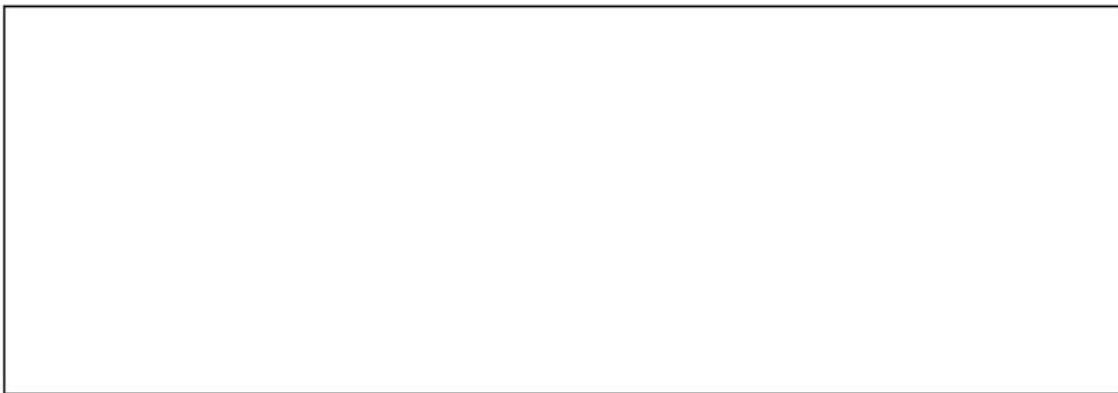
Petersen Manufacturing Company, Inc. products are covered by warranty for a period of one year from the date of purchase.

### Other Fine Products:

Fiberglass, Wood, Plastics, Concrete and GFRC are also manufactured by Petersen Manufacturing Company, Inc. For our other lines please visit our web site at [www.petersenmfg.com](http://www.petersenmfg.com)

# P M C

PETERSEN MANUFACTURING COMPANY INC



Petersen Manufacturing Company Inc  
Metal Products Division

P.O. Box 664 Denison, IA 51442  
1-800-832-7383 F:712-263-5090  
[www.petersenmfg.com](http://www.petersenmfg.com)  
[sales@petersenmfg.com](mailto:sales@petersenmfg.com)